



WORLDWIDE ELECTRIC MOTOR DATA SHEET



EP30-18-286T

| | | | |
|-----------------------------------------|------------------------------------------------|-------------|-------------|
| HORSEPOWER | 30 | | |
| RPM / POLES | 1800 / 4 | | |
| VOLTAGE / PHASE | 230 / 460 V / 3 | | |
| FRAME | 286T | | |
| ENCLOSURE / DEGREE OF PROTECTION | TEFC / IP55 | | |
| FREQUENCY | 60 HZ Suitable For 50 HZ Operation With 1.0 SF | | |
| FULL LOAD SPEED | 1780 RPM | | |
| SERVICE FACTOR | 1.25 SF at 40° C / 1.0 SF at 55° C | | |
| INSULATION CLASS | F | | |
| FULL LOAD AMPS; 230 / 460 | 71.45 / 35.73 A | | |
| LOCKED ROTOR AMPS (STARTING); 230 / 460 | 435 / 217.5 A | | |
| NO LOAD CURRENT | 20.0 / 10.0 A | | |
| NEMA CODE LETTER | G | | |
| EFFICIENCY / POWER FACTOR | <u>LOAD</u> | <u>EFF.</u> | <u>P.F.</u> |
| | 100% | 93.7% | 0.85 |
| | 75% | 93.6% | 0.84 |
| | 50% | 90.5% | 0.81 |
| DUTY CYCLE | S1 / Continuous | | |
| TORQUE | <u>FULL LOAD</u> | <u>LRT</u> | <u>BDT</u> |
| | 88.6 lb.ft. | 210% | 250% |
| | | | |
| SLIP | 1.10% | | |
| NEMA DESIGN | B | | |
| MOMENT OF INERTIA | 8.3 lb.ft. ² | | |
| NUMBER OF STARTS (Hot / Cold) | 2 Hot / 3 Cold | | |
| MAX. AMBIENT TEMPERATURE | 40° C at 1.25 SF / 55° C at 1.0 SF | | |
| MAX. ELEVATION | 3300 Ft. Above Sea Level | | |
| TEMPERATURE RISE (At Full Load) | 80° C | | |
| DE BEARING | 6311 | | |
| ODE BEARING | 6309 | | |
| GREASE TYPE | Mobil Polyrex EM | | |
| MOUNTING | F1 (F2 Suitable) | | |
| ROTATION | Bi-Directional | | |
| APPROXIMATE WEIGHT | 448 lbs. | | |
| AREA CLASSIFICATION | Class I, Division 2, Groups A, B, C, D | | |
| TEMPERATURE CODE AT 40°C AMBIENT | T3C | | |
| TEMPERATURE CODE AT 55°C AMBIENT | T3A | | |
| INVERTER RATING | 10:1 CT / 20:1 VT PWM Type | | |
| SPECIFICATION - In Accordance With | NEMA, CSA | | |



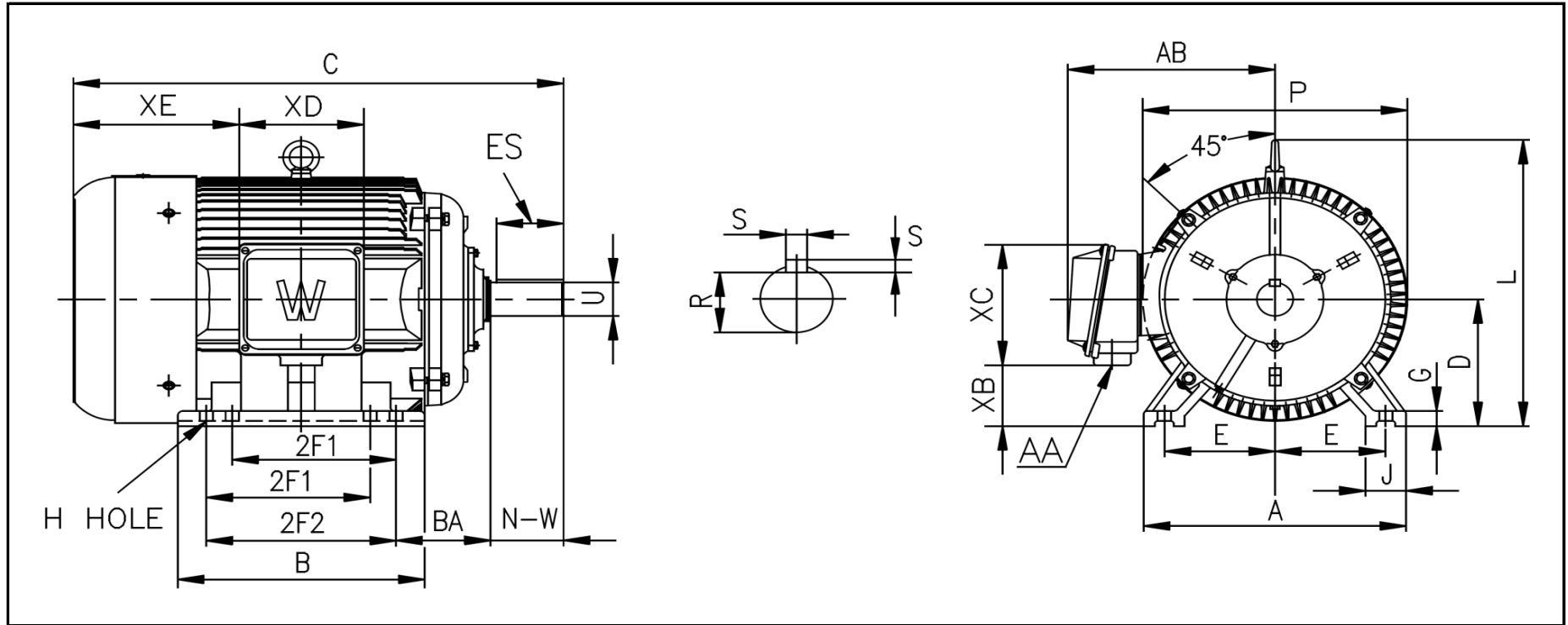
CC067A





WORLDWIDE ELECTRIC MOTOR DRAWING

EP-286T



DIMENSIONS - INCHES

| MOUNTING | | | | | A | B | C | D | G | J | P | L | AB |
|----------|-----|-----|------|------|-------|------|-------|---|------|------|-------|----|------|
| E | 2F1 | 2F2 | H | BA | | | | | | | | | |
| 5.5 | 9.5 | 11 | 0.53 | 4.75 | 13.74 | 13.7 | 28.35 | 7 | 0.98 | 2.68 | 15.92 | 17 | 13.5 |

| KEY | | KEYSET | SHAFT | | TERMINAL BOX | | | | |
|-----|------|--------|-------|-------|--------------|-----|-------|------|----|
| S | ES | R | N-W | U | AA | XB | XC | XD | XE |
| 0.5 | 3.28 | 1.591 | 4.62 | 1.875 | 2 | 1.6 | 10.55 | 8.98 | 9 |