

# Models

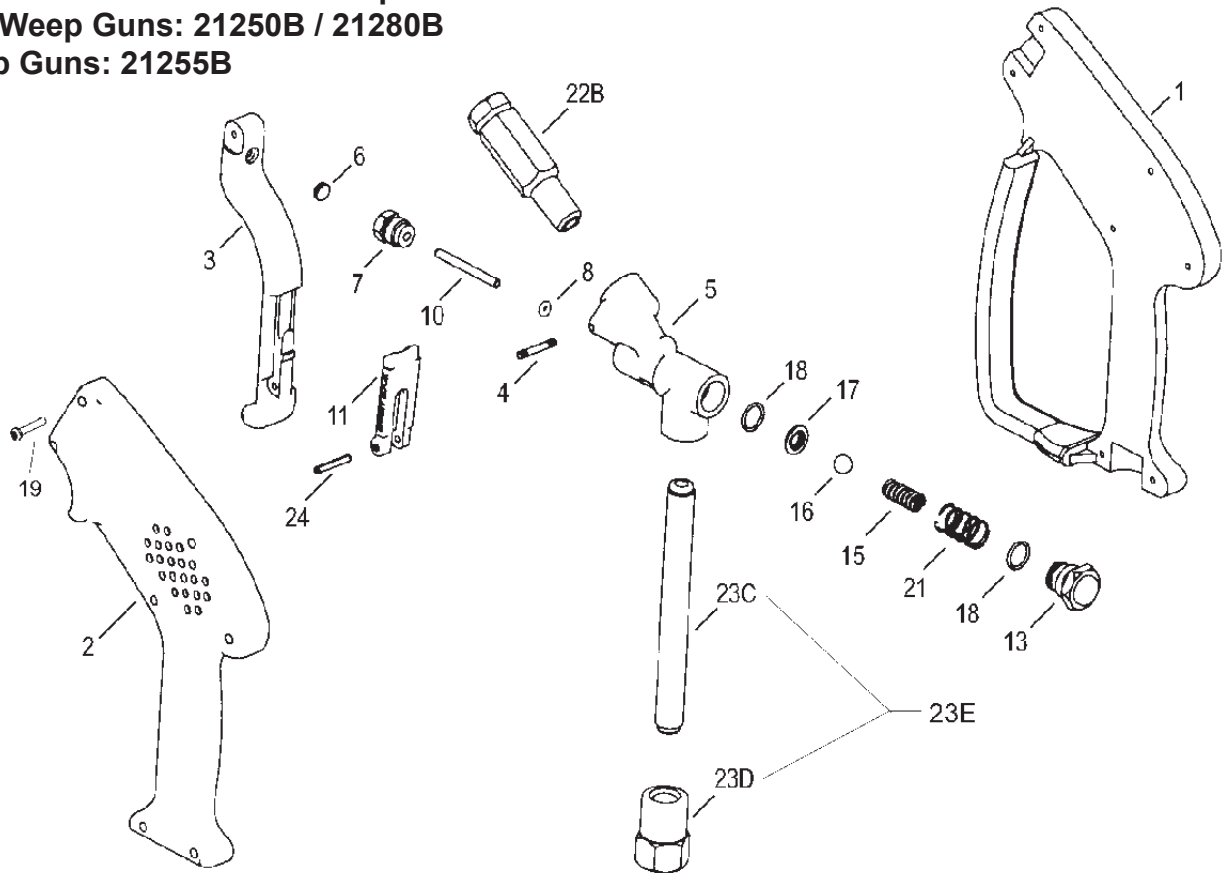
# Shut-Off Guns

# 21250B Series, 21255B, 21280B

Corrosion Resistant Non-Weep Guns: 21250B-4000-CR

Non-Weep Guns: 21250B / 21280B

Weep Guns: 21255B



| Item # | Part #   | Description                    | Qty | Item # | Part #     | Description   | Qty |
|--------|----------|--------------------------------|-----|--------|------------|---|-----|
| 1      | 21271B   | Housing, Right Half            | 1   | *21    | 21251      | Spring  | 1   |
| 2      | 21272B   | Housing, Left Half             | 1   | 22B    | 21256A     | Discharge Tube/Fitting Assy.                              | 1   |
| 3      | 21273**  | Trigger, 21250B, 21280         | 1   | 23C    | 21331      | Inlet Tube  | 1   |
| 3      | 21012♦   | Trigger, 21255B                | 1   | 23D    | 21244      | Inlet Fitting   | 1   |
| 4      | 21214    | Pin                            | 1   | 23E    | 21257      | Inlet Tube and Fitting<br>(21250B, 21255B, 21280B)        | 1   |
| 5      | 21430    | Valve Body                     | 1   | 23E    | 21257-0400 | Inlet Tube and Fitting, 303 S.S.<br>(21250B-4000 CR only) | 1   |
| 6      | 21213**♦ | Cam, Trigger                   | 1   | 24     | 21236**♦   | Lock Pin  | 1   |
| 7      | 21211    | Guide Sleeve                   | 1   |        |            |   |     |
| 8      | 21210    | O-ring                         | 1   |        |            |   |     |
| 10     | 21209    | Control Bolt                   | 1   |        |            |   |     |
| 11     | 21274**  | Lock, 21250B, 21280            | 1   |        |            |   |     |
| 11     | 21013♦   | Lock, 21255B                   | 1   |        |            |   |     |
| 13     | 21432    | Cap                            | 1   |        |            |   |     |
| 15     | 21431    | Valve Spring                   | 1   |        |            |   |     |
| 16     | 21205    | Valve Ball, 21250B, 21255B     | 1   |        |            |   |     |
| 16     | 21357    | Valve Ball, 21250B - 4000 - CR | 1   |        |            |   |     |
| 16     | 21812    | Valve Ball, 21280              | 1   |        |            |   |     |
| 17     | 21218    | Valve Seat, 21250B, 21280      | 1   |        |            |   |     |
| 17     | 21237    | Valve Seat, 21255B             | 1   |        |            |   |     |
| 18     | 21217    | O-ring                         | 2   |        |            |   |     |
| 19     | 21254    | Self Tapping Screw             | 7   |        |            |   |     |

\*\*Sold as an assembly - part number 21001  
♦Sold as an assembly - part number 21001B

**Kits**  
(all kits include items 8, 10, 15-18 and 21)

Kit # 21227:.....21250B  
 Kit # 21227-CR: .....21250B-4000-CR  
 Kit # 21240:.....21255B  
 Kit # 21289:.....21280B

# INSTALLATION & OPERATING INSTRUCTIONS

## OPERATING CONDITIONS

|                           | (U.S.)   | (Metric)     |
|---------------------------|----------|--------------|
| <b>Max Flow:</b> .....    | 10 GPM   | (37.8 l/min) |
| <b>Max Pressure:</b>      |          |              |
| 21250B, 21255B .....      | 5000 PSI | (345 bar)    |
| 21280B .....              | 1500 PSI | (103 bar)    |
| <b>Max Temp:</b> .....    | 300° F   | (149° C)     |
| <b>Inlet Port:</b> .....  |          | 3/8" FNPT    |
| <b>Outlet Port:</b> ..... |          | 1/4" FNPT    |

## DISASSEMBLY OF THE 21200 SERIES

- 1) Remove the seven self tapping screws (item #19) that secure the two halves of the housing together. Remove housings (items #1 and #2).
- 2) Drive out hinge pin (item #4) and remove trigger (item #3).
- 3) Remove the cap (item #13), springs (items #21 and #15), and ball (item #16).
- 4) Remove the guide sleeve (item #7), control bolt (item #10) and o-ring (item #8). Replace o-ring.
- 5) With a small dowel rod, drive-out the seats (#5) & o-ring (#18) from the guide sleeve part. Replace with new seat & o-ring.
- 6) Assemble in reverse order.

**WARNING: DO NOT USE ACID CONCENTRATES THROUGH GUN**

**WARNING: NEVER SECURE THE SHUT-OFF GUN IN AN OPEN POSITION (TRIGGER PULLED BACK) BY MEANS OTHER THAN THE OPERATOR'S HAND, ETC. BODILY HARM MAY OCCUR IF THE OPERATOR LOSES CONTROL OF THE SHUT-OFF GUN.**

**CAUTION: ALWAYS ENGAGE TRIGGER LOCKING MECHANISM (ITEM #11) WHEN NOT IN USE.**

**GIANT**

Performance Under Pressure  
Giant Industries, Inc.

900 N. Westwood Ave., P.O. Box 3187, Toledo, Ohio 43607

419-531-4600 Fax: 419-531-6836

www.giantpumps.com

© Copyright 2016 Giant Industries, Inc.

01/16 21250B.INDD