



A heavy duty, very high flow gun

SPECIFICATIONS

| | | |
|---------------------|---|--------|
| Part Number: | YG2953B | |
| Maximum Volume | 53.0 GPM | |
| Rated Pressure | 2900 PSI | |
| Maximum Pressure | 3190 PSI | |
| Maximum Temperature | 210° | |
| Port Sizes: | Inlet | 3/4" G |
| | Outlet | 1/2" G |
| Dimensions: | 8.6" x 8.6" x 2" | |
| Weight: | 3.00 lbs. | |
| Material | Stainless Steel, Brass, Plastic, Buna-N, Teflon | |

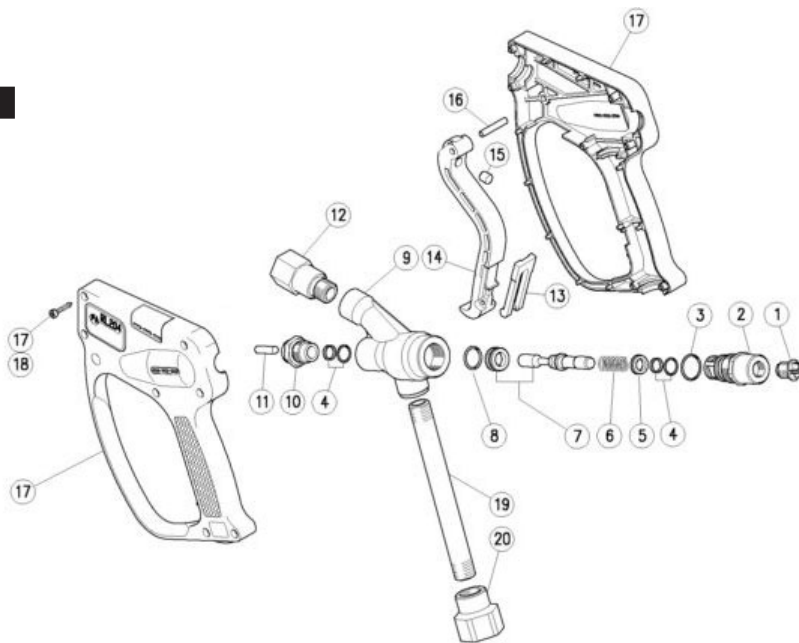
FEATURES

- Shockproof plastic housings
- Sturdy construction of Stainless Steel and brass
- Ergonomic construction
- Trigger operation minimizes fatigue
- Minimum load loss

PARTS LIST

| No. | Part No. | Description | Kit | Qty. |
|-----|-----------|---------------------------------------|-----|------|
| 1. | Y30581584 | Plug, 1/4M BSP | | 1 |
| 2. | Y30403731 | Spring Holder, 1/4BSP x M26 x 1M | | 1 |
| 3. | Y10307201 | O-ring, 1.78 x 20.35, Nickel | * | 1 |
| 4. | Y10202700 | Stem seal, 10 x 15 x 2.2 + O-ring | * | 2 |
| 5. | Y30404031 | Spacer ring, 10.1 x 15.8 x 3.8, Brass | | 1 |
| 6. | Y30404251 | Spring, 2.4 x 15.3x 30, SST | * | 1 |
| 7. | Y30404524 | Piston + Seal kt | * | 1 |
| 8. | Y10306801 | O-ring, 1.78 x 17.17, Nickel | * | 1 |
| 9. | Y30520535 | Housing, Brass | | 1 |
| 10. | Y30403831 | Front plug, M18 x 1.5, Brass | | 1 |
| 11. | Y30404131 | Parallel pin, 6 x 25.8, Brass | | 1 |
| 12. | Y30530651 | Coupling, 1/2 BSP, SST | | 1 |
| 13. | Y30151084 | Safety latch | | 1 |
| 14. | Y30530384 | Trigger | | 1 |
| 15. | Y30067551 | Stop pin, 8 x 7.1, SST | | 1 |
| 16. | Y30251731 | Parallel pin, 5 x 27.5, Brass | | 1 |
| 17. | Y30521224 | Casing kit | | 1 |
| 18. | Y16307551 | Tapping screw, 3.5 x 18, SST | | 7 |
| 19. | Y30510456 | Tube, M18 x 1.5, SST | | 1 |
| 20. | Y30520451 | Coupling, 1/4" BSP, SST | | 1 |

* Y30404624 Kit, repair (includes parts listed above)



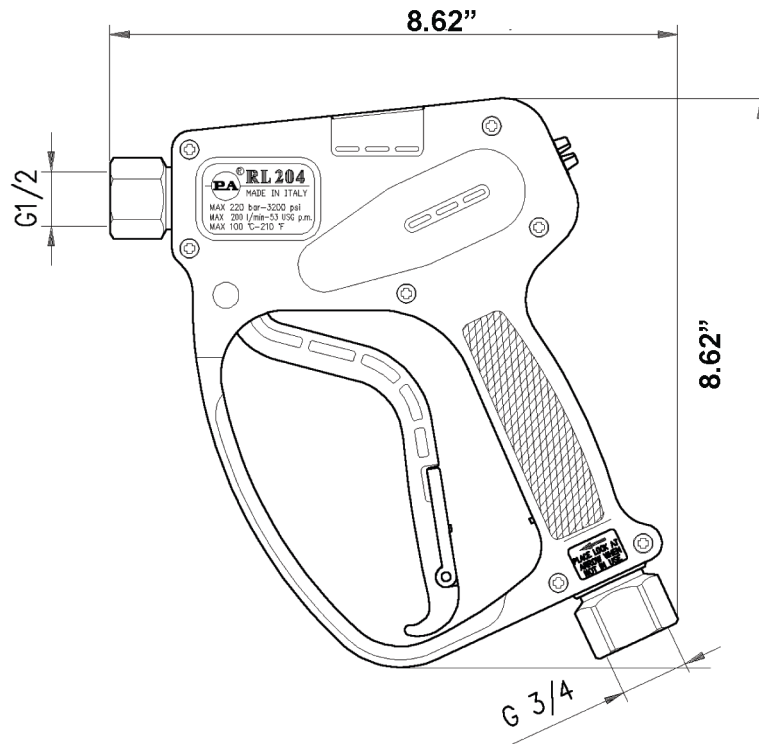
YG2953B

High Flow Spray Gun

GENERAL PUMP

A member of the Interpump Group

DIMENSIONS



INSTRUCTIONS

This product is to be used with clean, fresh water. For use involving different or corrosive liquids, contact your GP's customer service department. Appropriate filtration should be installed when using unclean liquids. Choose the gun that most closely matches the rated pressure, max flow and max temperature of the pressure wash system. In any case, the pressure of the machine should not exceed the permissible pressure rate imprinted on the gun.

INSTALLATION

This gun was designed to operate with hot water (in compliance with the technical specs), making sure not to exceed the max temperature. Always fit a safety valve to protect the system when the latter is under pressure. Choose a suitable nozzle and adjust the valve mounted in the front of the gun, thus obtaining a constant supply and avoiding unwanted pressure spikes. If the nozzle wears out, the pressure falls. When you install a new nozzle, adjust the system back to the original pressure.

Ref 300620 Rev.A
08-06

GENERAL PUMP 1174 Northland Drive Mendota Heights, MN 55120
Phone: (651)686-2199 FAX: (800)535-1745 e-mail: sales@gpcompanies.com www.generalpump.com

